



Programa Corredor Azul

Connecting people, nature and economies along the Paraná-Paraguay Wetland System

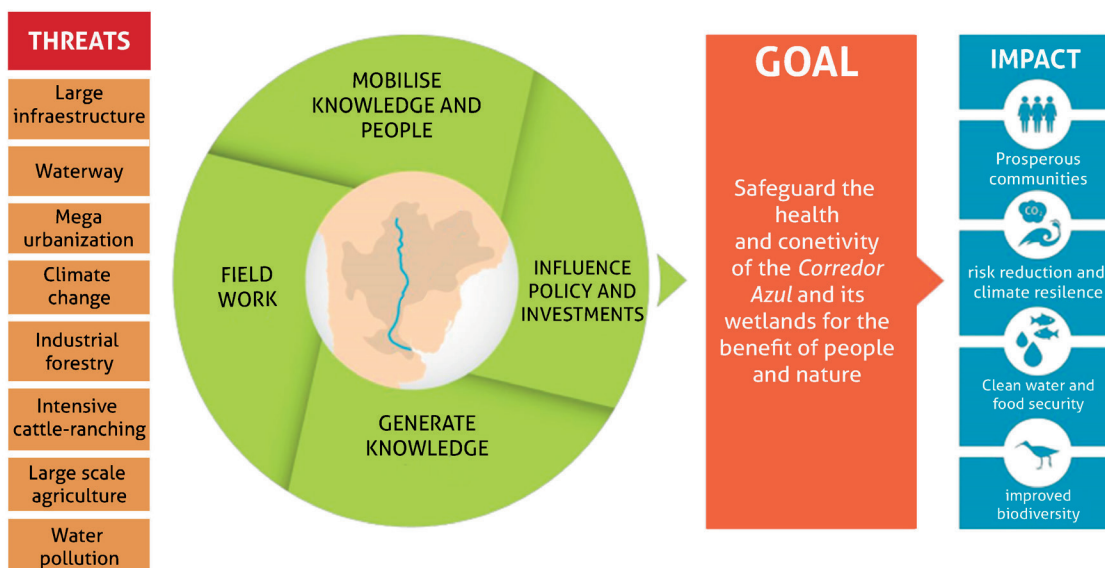
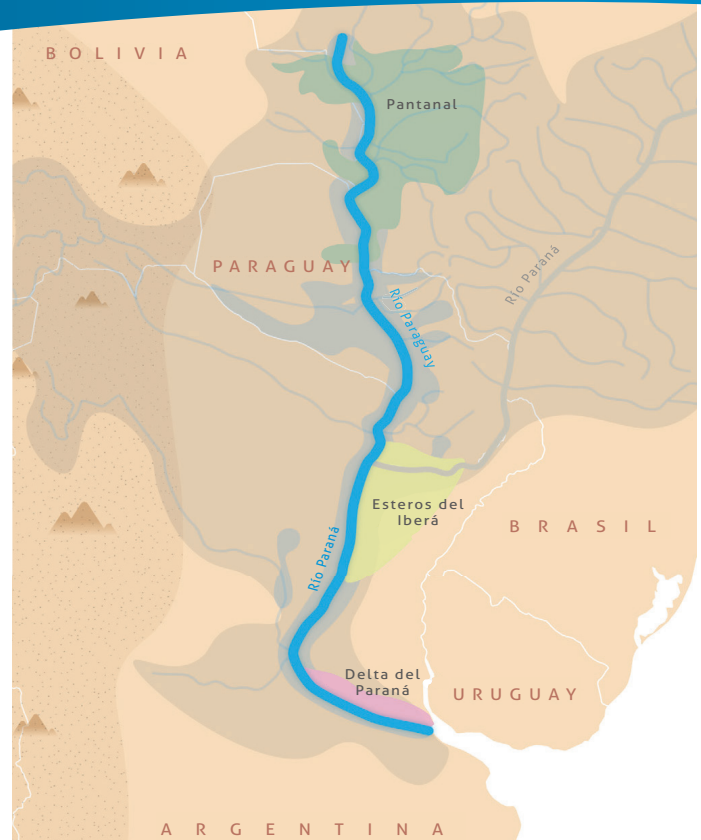
The goal of the **Corredor Azul** program is to safeguard the health and connectivity of the Paraná-Paraguay wetland system because of its natural value and great importance for the livelihoods of local communities and sustainable development of the region. This fluvial corridor, which supports a rich and unique biodiversity, is characterised by the high volumes of water carried, living up to its name “*Corredor Azul*”.

This program is focused on three wetland areas: the Pantanal, located in the Brasil, Bolivia and Paraguay border region; Esteros del Iberá and Delta del Paraná in Argentina.

Current situation

The **Corredor Azul** extends over 3,400 km from its source in the Brazilian Pantanal, through Bolivia and Paraguay to its end point in Delta del Paraná in Argentina. It is one of the world’s last remaining examples of a large, free-flowing river system.

The current development trajectory driven by governments and private interests pursuing short-term socio-economic ends threaten the goods and ecosystem services provided by the wetlands of this unique region, jeopardising local economies, biodiversity conservation and adaptation to climate change. If we do not take this reality seriously, we anticipate witnessing a severe degradation that will strongly affect the environmental security in the region. Amongst other things, this would result in a dramatic increase in the risk of catastrophic floods affecting people, the loss of biological and economic productivity, threats to local food and income security, and reduced resilience to the growing impacts of climate change.

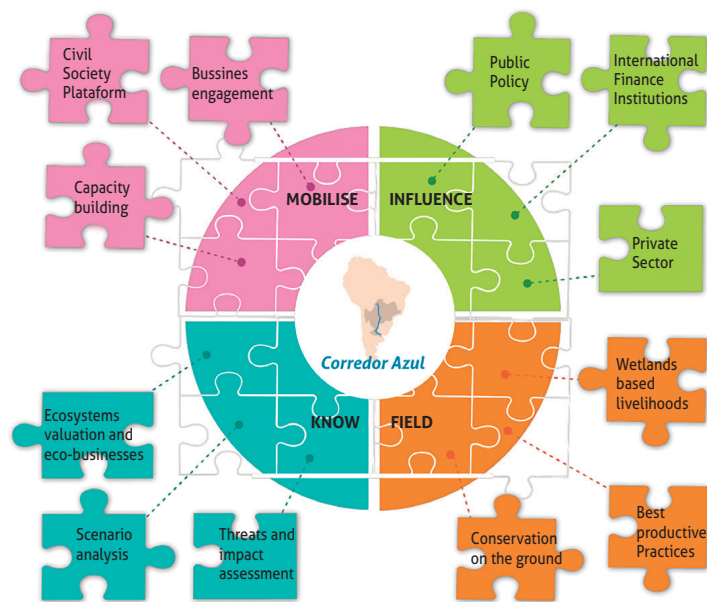




The *Corredor Azul* program expects to make a significant difference over the next 10 years to safeguard nature and enhance the livelihoods of people along the Paraná-Paraguay wetland system.

Through the generation and sharing of knowledge, social mobilisation, fieldwork and policy influence the program aims to:

- Contribute to implement sustainable and inclusive management practices in at least 1 million hectares of wetlands in the region.
- Accomplish a more sustainable production avoiding wetland degradation and loss in at least 300,000 hectares
- Secure the health and connectivity of the system, thus increasing resilience to climate change and safeguarding many millions of people from impacts such as flooding and water pollution.
- Promote and replicate local-scale innovations in wetland management and sustainable production, contributing to secure the livelihoods of traditional local communities such as fishermen, indigenous groups, livestock producers, and people living in urban areas under the influence of the Corredor Azul.



Pantanal



Esteros del Iberá



Delta del Paraná

Fundación Humedales Wetlands International

Cap. Gral. Ramón Freire 1512 (1426) Buenos Aires - Argentina
 Tel./fax: + 54 11 4552 2200
 E-mail: Info@humedales.org.ar

<http://lac.wetlands.org/> <https://www.facebook.com/fundacion.humedales/>

Mupan - Mulheres em Ação no Pantanal

corredor_azul_pantanal@mupan.org.br
<http://www.mupan.org.br/>



This program is implemented in Brasil by Mupan



Corredor Azul is a program of Wetlands International with the support of DOB Ecology