



ECOLOGICAL RESTORATION IN THE PANTANAL

Impacting Communities and Ecosystems

The Pantanal is one of the largest floodplains on Earth, sustaining biodiversity, ecosystem services, and traditional livelihoods. Recent extreme events, for instance droughts and wildfires, highlight the urgent need for adaptive restoration actions which integrate scientific knowledge with local practices.

Wetlands International Brazil and Mupan – Women in Action in the Pantanal work directly on the recovery of degraded landscapes, combining restoration techniques, community training, and monitoring. Our goal is to restore essential ecological functions such as water regulation and habitat connectivity, whilst also generating local socio-economic benefits.



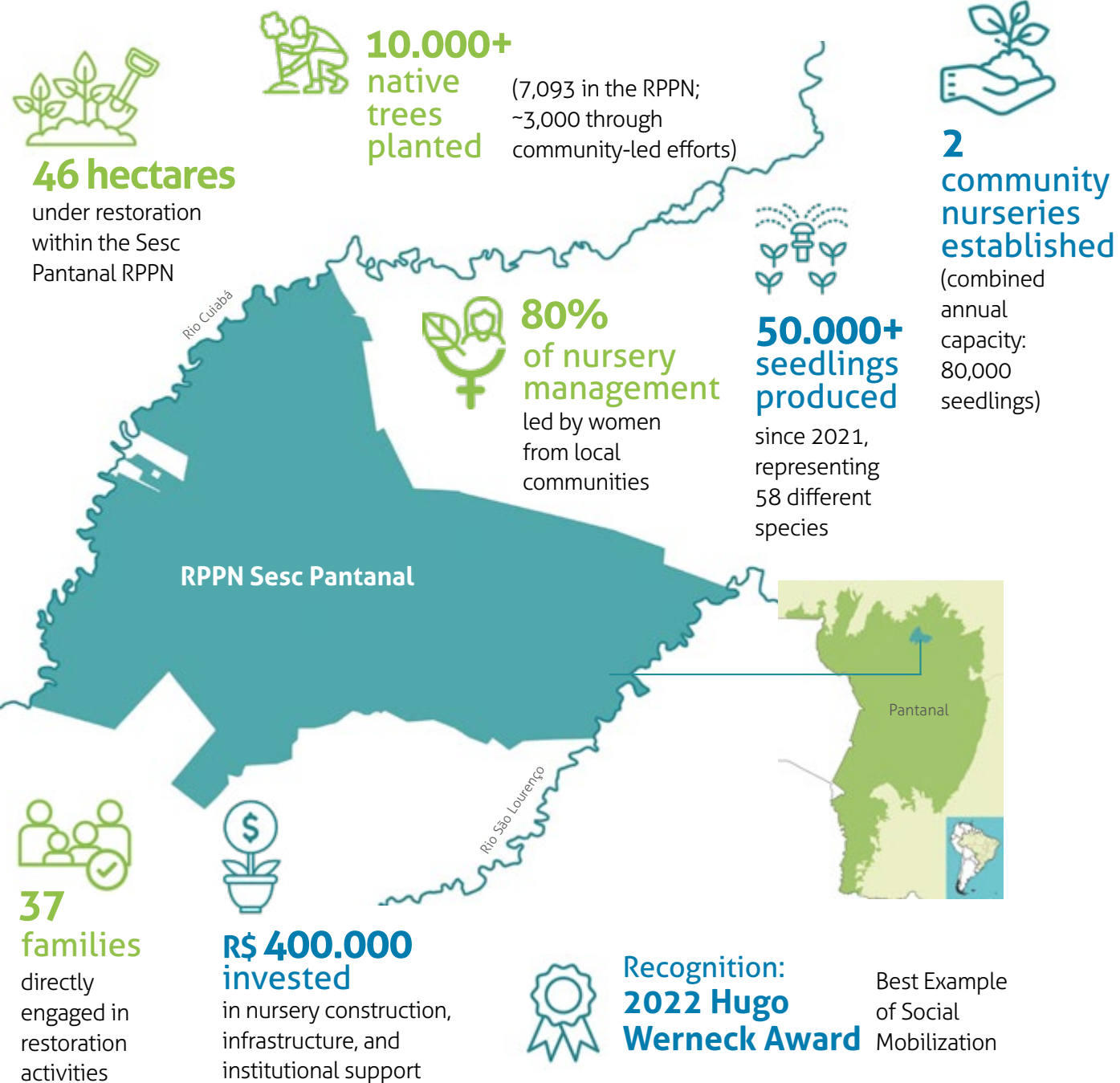
Wetlands
INTERNATIONAL

AquaREla Pantanal Initiative

A restoration project of **46 hectares of native vegetation** along the Cuiabá River – within the Sesc Pantanal Private Natural Heritage Reserve (RPPN, the largest in Brazil with 108,000 hectares Ramsar Site since 2023 and Core Area of the Pantanal Biosphere Reserve since 2000). The initiative engages surrounding **traditional communities, especially women**, through the **implementation of social technologies, capacity-building, management tools, and mitigation actions**.



32 training
events held



Pantanal Restoration Framework

Development of a technical protocol for the restoration of the Pantanal and other wetlands, with guidelines for monitoring and adaptive practices tailored to macrohabitats and the specific dynamics of the biome.

First restoration protocol specifically designed for the Pantanal

(macro-habitat based).

Compilation and analysis of 7 restoration projects

generating applicable scientific evidence.

2 technical workshops

held with managers and restoration project teams.



3 publications generated

(protocol, monitoring guide, and practical synthesis).

Technical contributions to the Pantanal Restoration Pact

including inputs for public policy.





Support for the Kadiwéu Indigenous Territory

Revitalization of culturally significant nurseries, knowledge exchange with other traditional communities, and seedling planting at a key spring site and watercourses, with a focus on mapping new areas for ecological recovery.



Wetlands
INTERNATIONAL